



233
Lakewood
Drive

OAKVILLE ONTARIO



gc

GILLIAN COUSIN

SALES REPRESENTATIVE
RE/MAX ABOUTOWNE

4 + 1

Bedrooms

Walkout

Lower Level

4 + 1

Bathrooms

Pool

Heated Saltwater

6,569sqft.

4,392 AG / 2,177 BG

3 car

Tandem Garage

113×143

Lot Size (ft.)

Style

Like No Other

Located close to the shores of Lake Ontario in South Central Oakville, on the picturesque cul-de-sac Lakewood Drive, this brilliant David Smalls designed home will captivate your senses. This 4+1 bedroom, 4+1 bathroom home offers over 6,500 sqft. of quiet luxury with high end fixtures, and fine textural details and materials. The main floors double height foyer and living room with large picture windows allow you to feel like you are living amongst the trees. The eat-in kitchen is truly a cooks haven. Marble countertops, large Oak island, gas range, additional wall oven and microwave, integrated fridge, freezer and dishwasher. A separate servery behind the kitchen is equally tasteful and stylish. Formal dining room, covered deck with fireplace, powder room and a mudroom that is an organizers dream, round out the main floor. Upstairs, the primary suite provides two walk-in closets and a blissful en-suite bathroom. Down the hall, you will find the laundry room and three additional bedrooms all have walk in closets and en-suite or Jack and Jill bathrooms. The walk out lower level allows for a true extension of your living space and was designed for whole home living. Find an office, gym, bedroom, bathroom and large open space with gas fireplace, and wet bar. The large sliding doors lead to an expansive covered patio and the heated salt water pool which is the centre piece of the backyard. Thoughtful, extensive landscaping and planting around the property provide privacy and a sense of well-being. High ceilings (10' main, 9' upper and lower), three car tandem garage, central vac, security system, heated tile floors, 3 fireplaces, smart home switch enabled, irrigation system. Close to excellent public schools, prestigious private schools, walking distance to Downtown Oakville, parks and so much more. This is truly a home for a those who enjoy thoughtful, subtle touches of luxury and comfort.

233

Lakewood

Drive

Details:

GENERAL INTERIOR

- Wide Plank White Oak Engineered Hardwood On All Levels
- White Oak Stairs with Iron Spindles and Oak Railings
- All Tile Floors Are Heated
- All Closets Have Built-Ins
- Solid Core V-Groove Interior Doors
- Ceiling Heights:
 - Main Floor - 10ft
 - Second Floor - 9ft
 - Lower Level - 9ft
- Wired for Automatic Drapery (Smart Switch Enabled)
- Hard Rock Maple Interiors of Kitchen and Bathroom Drawers/ Cupboards
- Solid Poplar Baseboards
- Marquis Bentley Gas Fireplaces
- Home Surveillance/Security System

MAIN FLOOR

Foyer

- Large Double Height Entry with Double Closet
- Double Lantern Cage Chandeliers on Motorized Lift System

Dining

- Separate Formal Dining Room
- Additional Open Dining Space Between Kitchen and Living Room

Mudroom

- Herringbone Brazillian Slate Tile Floors
- Floor to Ceiling Storage Lockers
- Built-In Storage Bench
- Garage Access

Kitchen

- Shaker Style Drawers and Cabinets
- Solid Stained Red Oak Island
- Calcutta Vagli Marble Countertops
- Fisher & Paykel 36" Professional 6 Burner Gas Range
- Fisher & Paykel 30" Integrated Column Fridge
- Fisher & Paykel 30" Integrated Column Freezer
- Fisher & Paykel 30" Professional Compact Micro+Convection-Speed Wall Oven
- Fisher & Paykel 30" Professional Self Cleaning Wall Oven
- Fisher & Paykel Integrated Tall Dishwasher
- Shaws Ceramic Inset Sink
- Covered Range Hood
- Perrin & Rowe Fixtures
- Large Sliding Doors Opening to Covered Deck

Pantry/Servery

- Shaker Style Drawers and Cabinets
- Mix of Wood & Fluted Glass Cabinet Fronts
- Open Shelving with Brass Details
- Perrin & Rowe Fixtures
- Silestone Soapstone Countertop

Living Room

- Double Height Ceiling
- Limestone Fireplace With Gas Insert (Plugs for TV Built-In)
- Precast Plaster Mantel and Surround
- Round Tiered Chandelier on Motorized Lift System
- Large Windows Surrounded by Trees and Overlooking Pool

Powder Room

- Brazillian Slate Tile Floors
- Marble Vanity
- WaterWorks Fixtures

SECOND FLOOR

- Wide Bridge Overlooking Living Room and Foyer
- Oversized Linen Closet

Primary Bedroom

- Grand Double Door Entry
- Two Walk-In Closets

Primary Ensuite Bathroom

- Freestanding Tub
- Enclosed Toilet
- WaterWorks Fixtures
- Limestone Tile Floor
- Double Vanity
- Carrera Marble Shower Walls and Vanity Top

Bedroom 2

- Walk-In Closet
- Ensuite Bathroom

Bedroom 2 Ensuite Bathroom

- Calcutta Marble Penny Floor Tile
- White Oak Vanity
- Quartz Vanity Top
- Zellige Tub/Shower Tile
- Rohl Polished Nickel Fixtures

Bedroom 3

- Walk-In Closet
- Jack and Jill Bathroom Access
- Window Seat with Storage

Bedroom 4

- Walk-In Closet
- Jack and Jill Bathroom Access

Jack and Jill Bathroom

- White Oak Double Vanity
- Calcutta Viola Marble Vanity Top
- Limestone Tile Floor
- Zellige Shower Wall Tile
- Perrin & Rowe Unlacquered Brass Fixtures

Laundry Room

- LG Front Loading Washer and Dryer
- Sink with Perrin & Rowe Fixtures
- Quartz Counter
- Shaker Style Upper and Lower Cabinets
- Brass Hardware
- Porcelain Wall Tile
- Cement Floor Tile

LOWER LEVEL (WALKOUT)

- Large Open Entertainment and Games Space
- Limestone Fireplace With Gas Insert
- Precast Plaster Mantel and Surround (Plugs for TV Built-In)
- Finished Storage Room
- Large Sliding Doors Opening to Backyard Pool and Lounge Areas

Wet Bar

- Sink
- 24" Beverage Centre Fridge
- Zellige Tile Backsplash
- Porcelain Counter and Open Shelves
- Shaker Style Cabinetry

Office

- Aluminum and Glass Door

Gym

- Double Aluminum and Glass Doors
- Rubber Floor
- Ceiling Fan
- Mirrored Wall

Bedroom 5

- Sliding Doors Opening to Backyard
- Walk-In Closet
- Direct Bathroom Access

Bathroom

- Double White Oak Vanity with Large Storage Drawers
- Quartz Counter
- Herringbone Brazillian Slate Tile Floor
- Large Shower with Zellige Wall Tile
- Rohl Polished Nickel Fixtures

EXTERIOR

- Large 4 Car Driveway
- Three Car Tandem Garage with Epoxy Floor
- Steel Garage Door
- Steel Front Door
- Techo Bloc Walkways and Pool Deck
- Wood Board and Batten Siding
- Indiana Limestone Siding
- Standing Seam Metal Roof
- Aluminum Soffits, Eaves and Fascia
- Aluminum Windows
- Pine Front Porch, Rear Patio/Deck and Garage Overhang Ceiling
- Trex Main Level Deck
- Glass Deck Railing
- Gas Fireplace on Deck
- Heated Saltwater Pool
- Matching Board and Batten Pool Shed
- Armour Stone Landscape Detailing
- Extensive Planting of Trees, Bushes and Flowers (Norway Spruce, River Birch, Hydrangea, Dogwood, Yews and Hostas)
- Irrigation System
- Exterior Lighting

Mechanicals

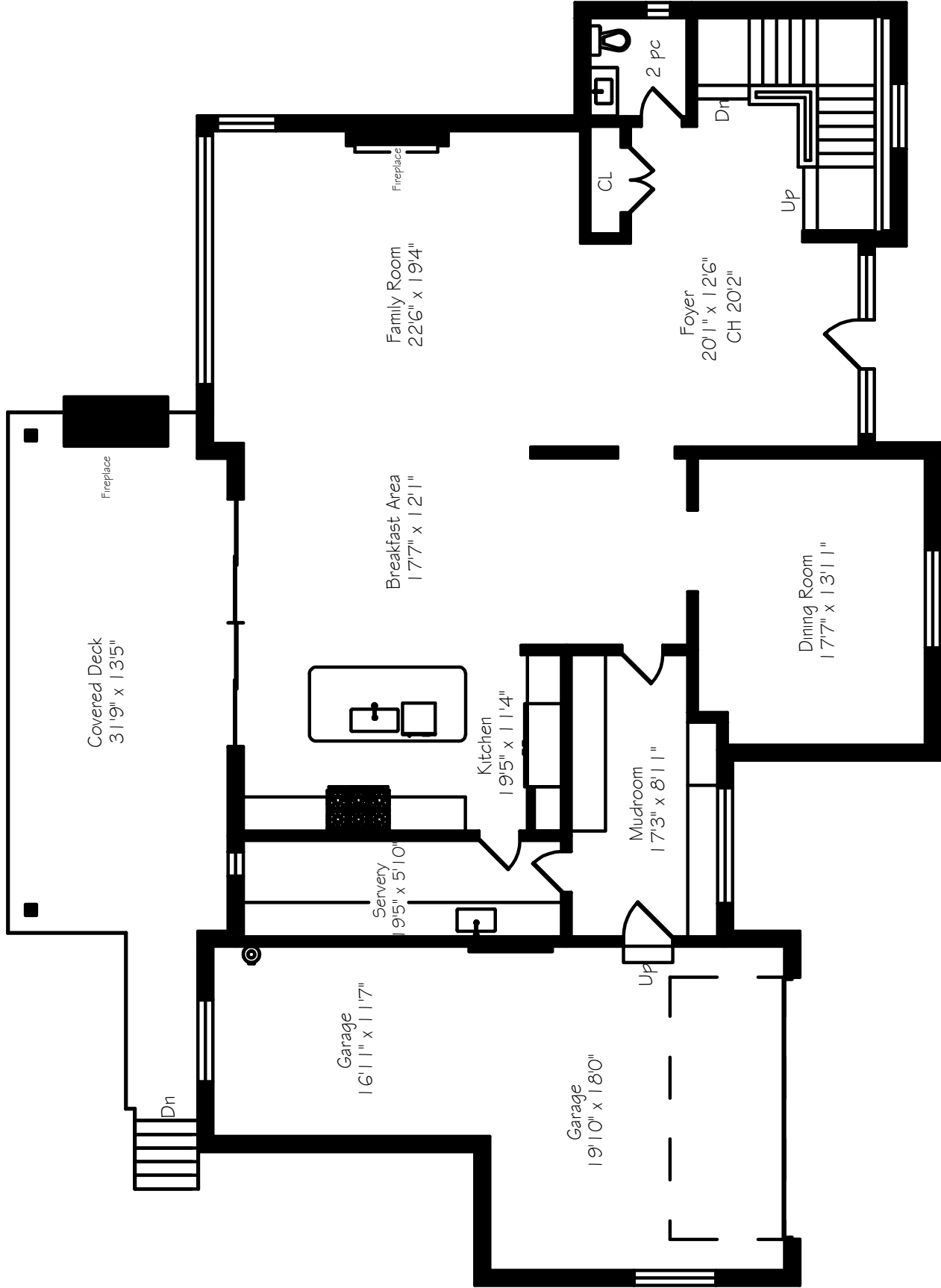
- Two A/C Units
- Two Furnaces with Humidifiers (One in Mechanical Room and Second in Ceiling of Second Level)
- 75G/283 L Water Heater
- Air Exchange System
- Central Vac

233

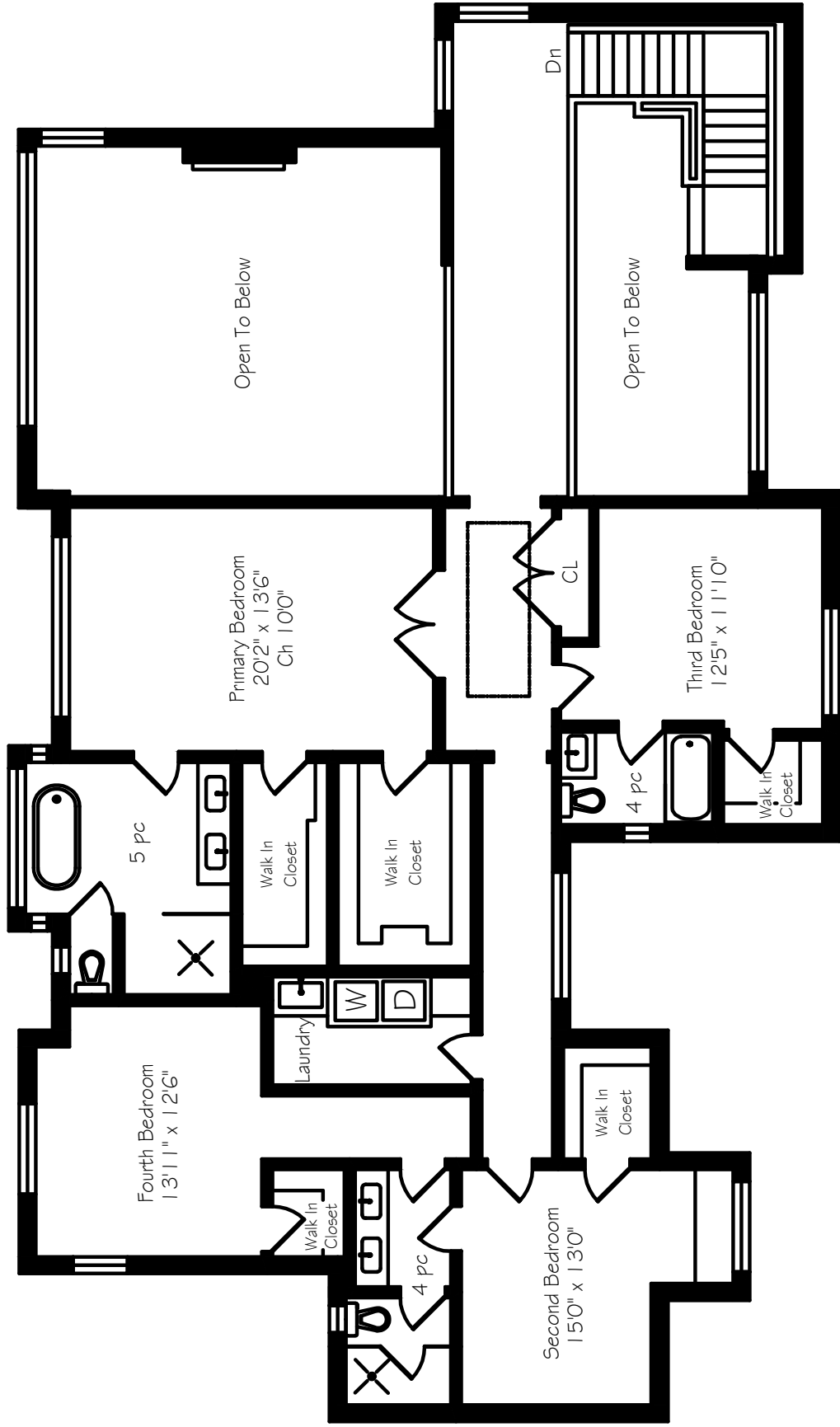
Lakewood

Drive

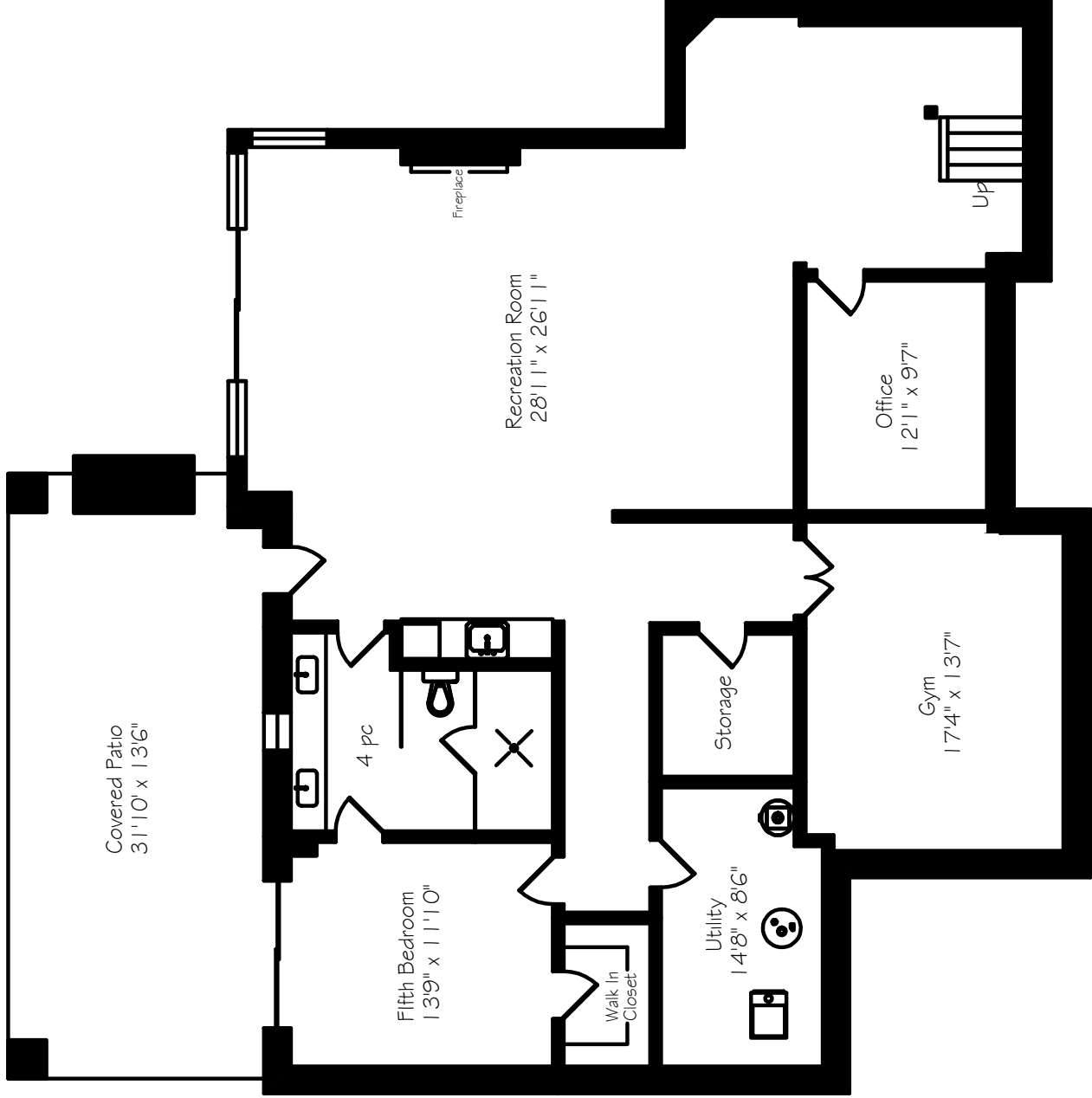
Floorplans:



Main Floor
2177 Square Feet
+ 627 Garage



Second Floor
2215 Square Feet



Lower Level
2177 Square Feet



For more photos please see gilliancousin.com. For additional details and pricing, please contact Gillian Cousin by email at gc@gilliancousin.com or call 647-295-1854.

GILLIANCOUSIN.COM — 905.338.9000
309 LAKESHORE ROAD EAST OAKVILLE ON, L6J 1J3

gc
GILLIAN COUSIN
SALES REPRESENTATIVE

RE/MAX
ABOUTOWNE
REALTY CORP., BROKERAGE
INDEPENDENTLY OWNED AND OPERATED